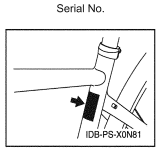


PARTS CATALOG  
**CROSSCORE RC**

CCORRCLWHT (X2U4 - 010A)  
 CCORRCLSAG (X2U4 - 010B)  
 CCORRCLDES (X2U4 - 010C)  
 CCORRCMWHT (X2U5 - 010A)  
 CCORRCMSAG (X2U5 - 010B)  
 CCORRCMDES (X2U5 - 010C)

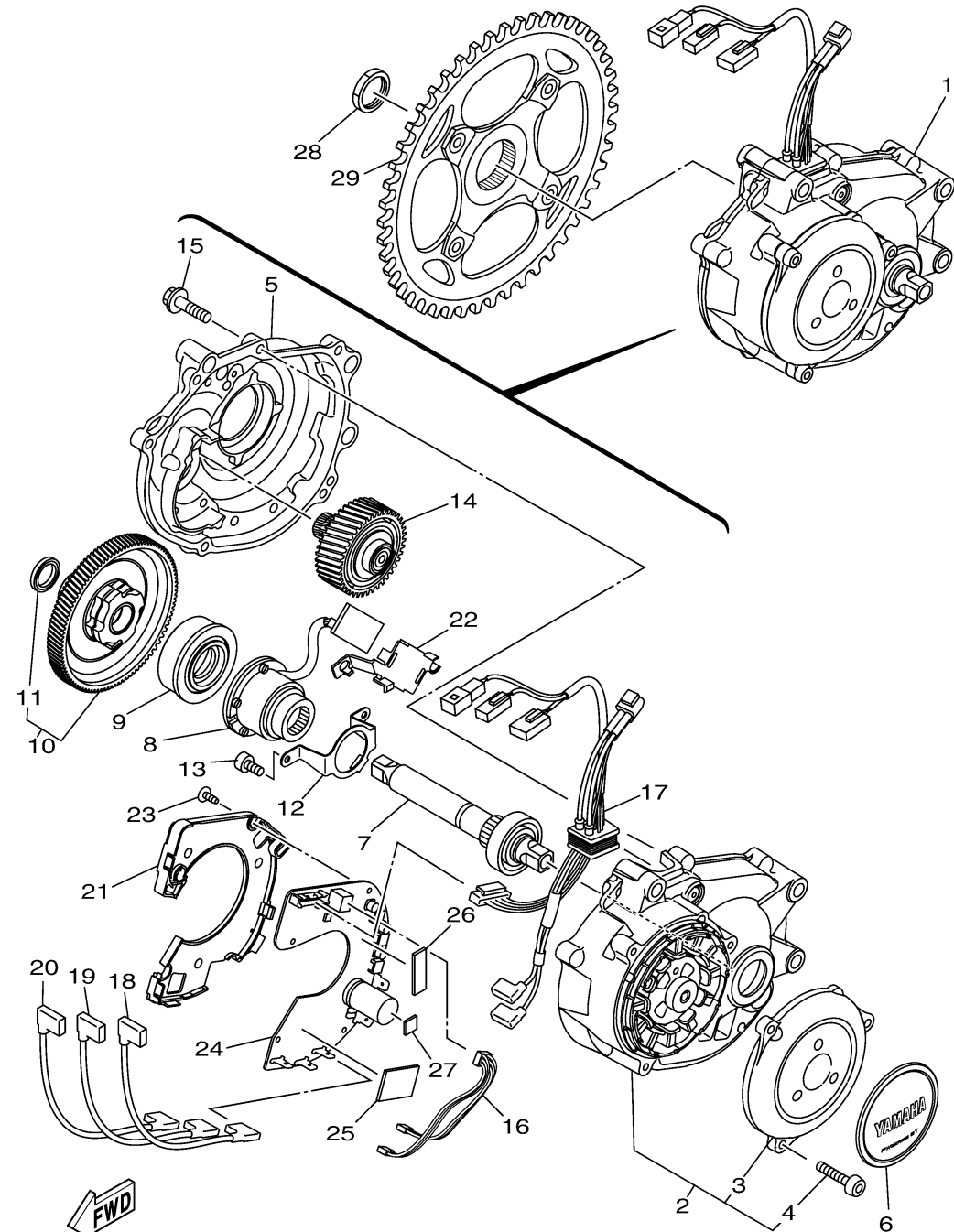
Color	Abbreviation	Color Code
Light Bluish Gray Pearl 1	LBNP1	1638
Mat Greenish Gray Metallic 1	MGNM1	1869
Deep Yellowish Red Metallic 7	DYRM7	1873



OWNERS      LIT-15626-00-14  
 SERVICE      LIT-15616-00-02  
 ASSEMBLY    LIT-15666-00-14

PC65CRL  
 PC65CRM  
 PC65CRS  
 2022

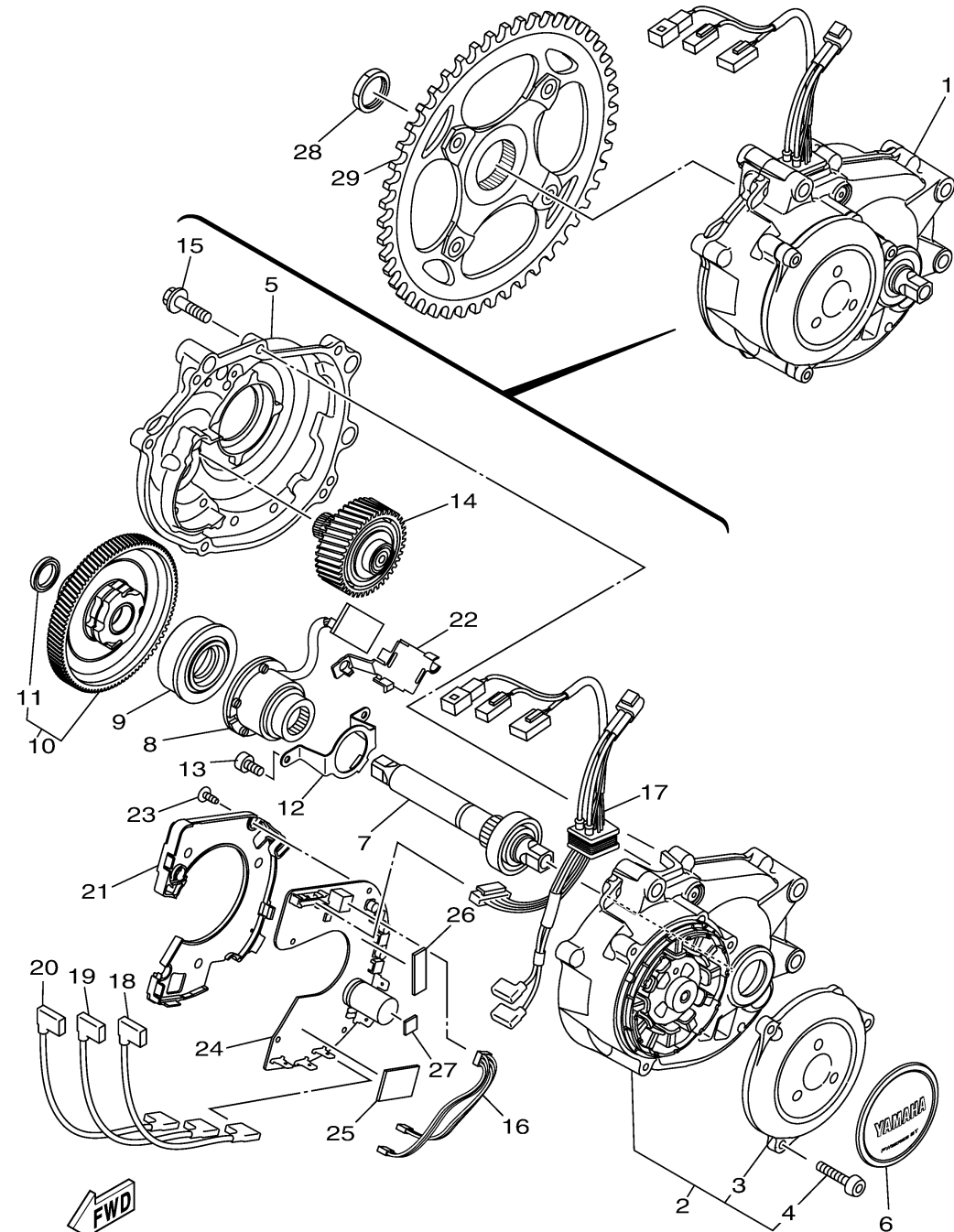
# POWER UNIT



X2U1110-X010

Ref No.	Part Number	Description	Qty	Remarks
1	X2U-17061-40-00	DRIVE UNIT ASSY	1	
2	X1R-81890-21-00	..MOTOR ASSY	1	
3	X0P-87153-01-00	...COVER, STATOR	1	
4	92014-05016-00	...BOLT, BUTTON HEAD	3	
5	X1R-17510-00-00	..HOUSING COMP.	1	
6	X0P-15490-10-00	..COVER ASSY	1	FOR ST
7	X2S-17421-00-00	..AXLE, DRIVE	1	
8	X0S-17062-03-00	..TORQUE SENSOR ASSY	1	
9	X1R-16180-00-00	..ONE WAY BOSS COMP.	1	
10	X94-16570-03-00	..CLUTCH BOSS ASSY	1	
11	93106-17001-00	...OIL SEAL	1	
12	X1R-17558-10-00	..PLATE, BEARING	1	
13	91312-04010-00	..BOLT, HEXAGON SOCKET HEAD	2	
14	X1R-17840-00-00	..DRIVEN GEAR ASSY	1	
15	90105-05029-00	..BOLT, FLANGE	5	
16	X1R-86171-00-00	..WIRE, LEAD 1	1	
17	X2U-86172-00-00	..WIRE, LEAD 2	1	
18	X0P-86173-00-00	..WIRE, LEAD 3	1	
19	X0P-86174-00-00	..WIRE, LEAD 4	1	
20	X0P-86175-00-00	..WIRE, LEAD 5	1	

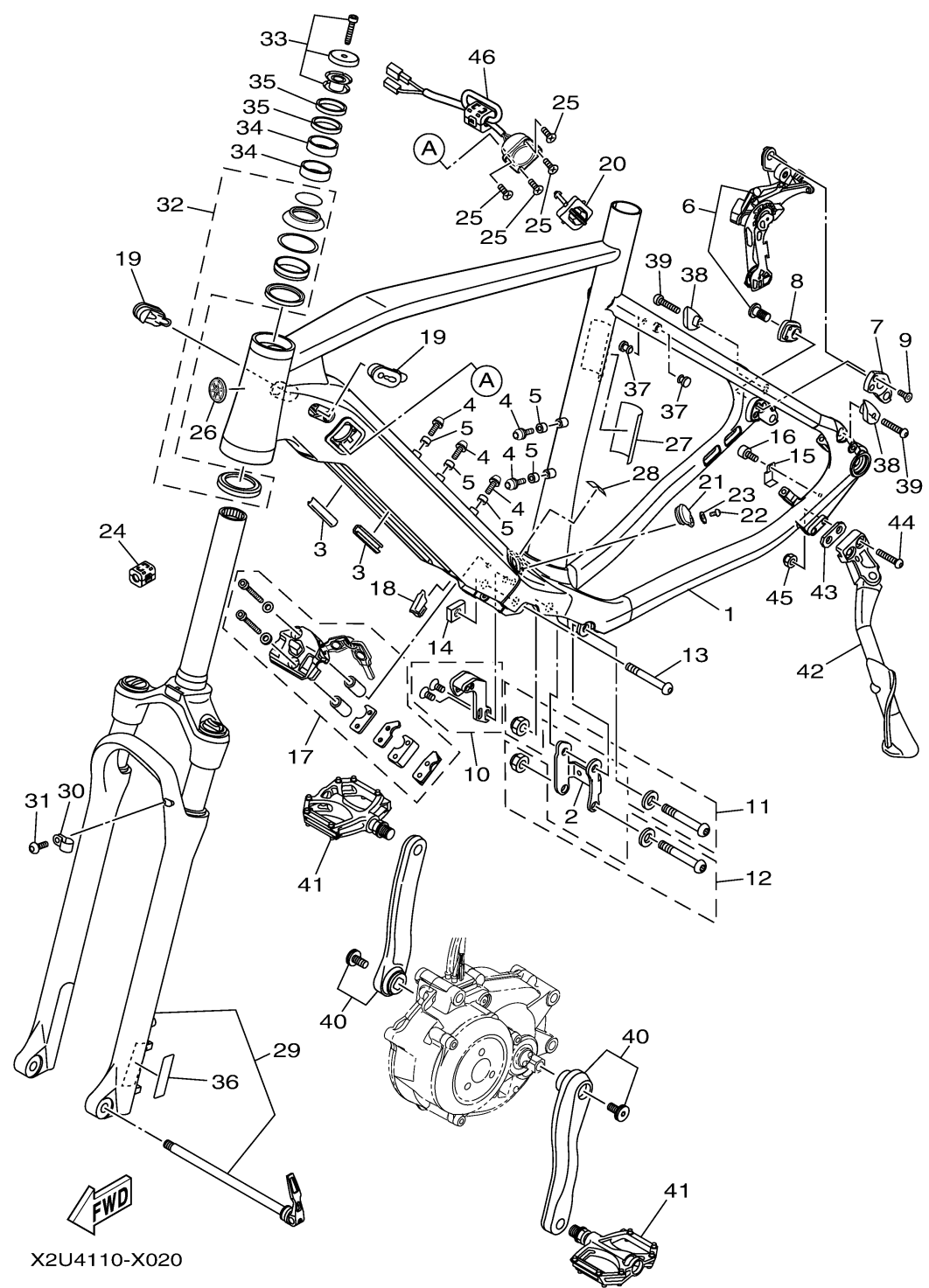
CONTINUED ON NEXT FRAME >



X2U1110-X010

## POWER UNIT

Ref No.	Part Number	Description	Qty	Remarks
21	X1R-17524-00-00	..HOLDER	1	
22	X0P-17822-01-00	..HOLDER, SENSOR	1	
23	90164-03009-00	..SCREW, TAPPING	4	
24	X2U-86212-40-00	..CONTROLLER ASSY	1	
25	X0P-8A8B0-10-00	..SHEET	1	
26	X0P-8A8B1-10-00	..SHEET 1	1	
27	X0P-8A8B2-10-00	..SHEET 2	1	
28	X94-17463-30-00	NUT, LOCK	1	BLACK
29	X2U-E7452-00-00	SPROCKET, DRIVE	1	



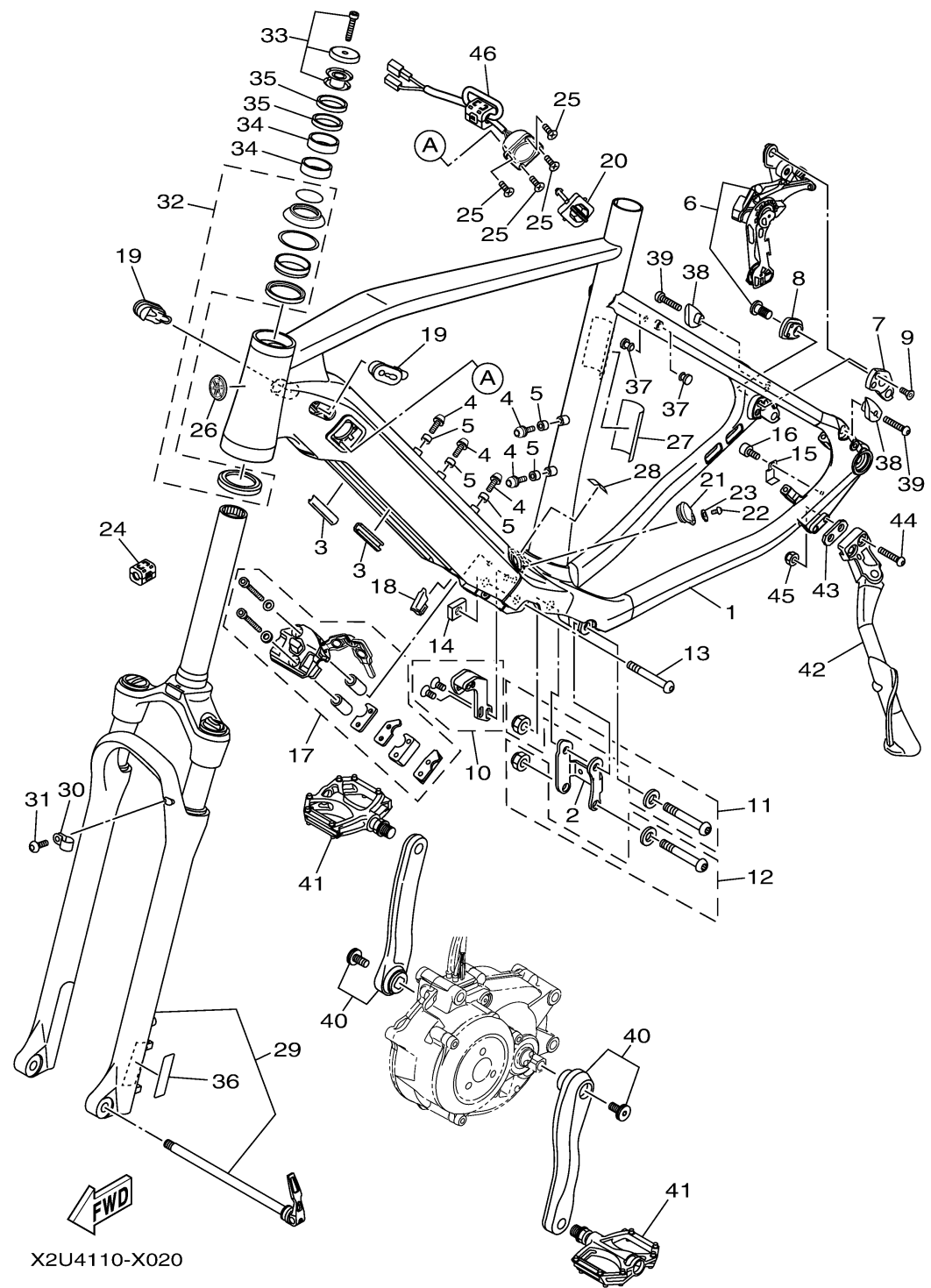
X2U4110-X020

# FRAME

Ref No.	Part Number	Description	Qty	Remarks
1	X2U-F1110-30-P0	FRAME COMP.	1	UR FOR LBNP1
1	X2U-F1110-30-P1	FRAME COMP.	0	UR FOR MGNM1
1	X2U-F1110-30-P2	FRAME COMP.	0	UR FOR DYRM7
1	X2U-F1110-40-P0	FRAME COMP.	0	UR FOR LBNP1
1	X2U-F1110-40-P1	FRAME COMP.	0	UR FOR MGNM1
1	X2U-F1110-40-P2	FRAME COMP.	0	UR FOR DYRM7
2	X2U-F1427-00-00	BRACKET, REAR LOWER 1	1	
3	X2U-F117G-00-00	PROTECTOR	2	
4	X1M-F11C5-00-00	SCREW 1	5	
5	X2U-F1757-00-00	WASHER, SPECIAL 1	5	
6	X2U-F535B-20-00	REAR DERAILLER	1	
7	X1M-F114D-10-00	BRACKET DERAILLER, REAR	1	
8	X1M-F112K-00-00	BRACKET 5	1	
9	X1M-F11C6-00-00	SCREW 2	2	
10	X2U-F2187-00-00	GUIDE, CHAIN	1	
11	X2U-F174U-00-00	BOLT NUT SET	1	
12	X2U-F174U-10-00	BOLT NUT SET	1	
13	X2U-F2125-00-00	BOLT	1	
14	X2U-F3393-00-00	NUT, SPECIAL	1	
15	X1M-F256L-00-00	BRACKET	1	

CONTINUED ON NEXT FRAME >

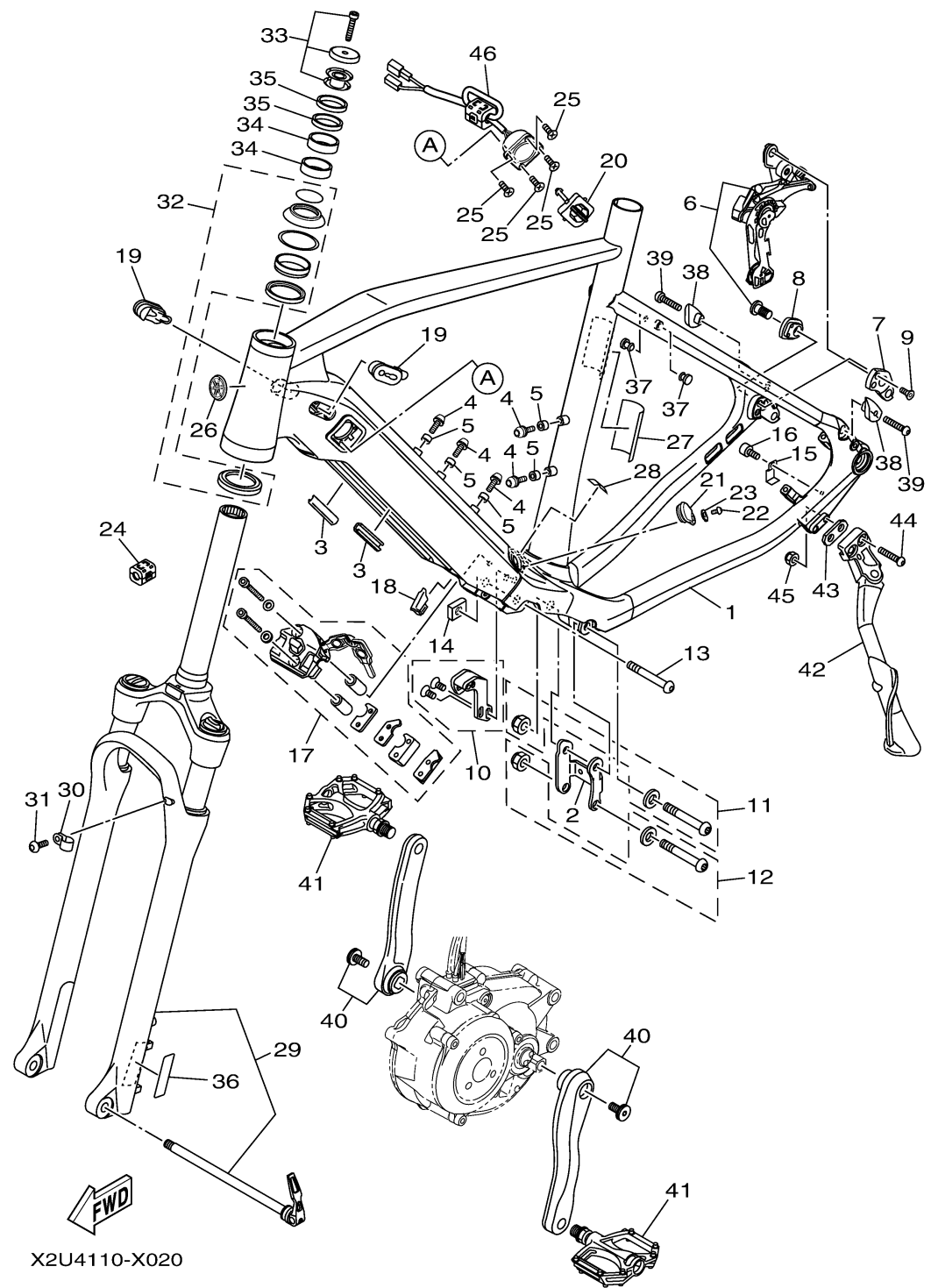
# FRAME



Ref No.	Part Number	Description	Qty	Remarks
16	X1M-F11C7-00-00	SCREW 3	1	
17	X2U-F16A0-00-00	LOCK ASSY	1	
18	X2U-F637H-00-00	HOLDER, WIRE 2	1	
19	X2U-F1719-10-00	GROMMET	2	
20	X2U-F844B-00-00	LID 1	1	
21	X2U-H2578-00-00	CAP, KEY 2	1	
22	X2U-F3111-00-00	BOLT, CAP	1	
23	X2U-F1515-00-00	WASHER, SPECIAL	1	
24	X1V-HA900-00-00	CORE	1	
25	X0U-F4473-00-00	SCREW	4	
26	X1V-F118E-00-00	EMBLEM 1	1	
27	X1M-F11A5-10-00	LABEL INFORMATION	1	
28	X1M-H4306-00-00	LABEL, CAUTION	1	
29	X2U-F3780-30-00	FORK COMP. 1	1	
29	X2U-F3780-40-00	FORK COMP. 1	0	
30	X0N-F1339-00-00	GUIDE, WIRE	1	
31	X1M-F11D3-00-00	SCREW 6	1	
32	X0N-F341A-10-00	STEERING SET	1	
33	X0N-F287K-10-00	CAP ASSY	1	
34	X0N-F3363-00-00	COLLAR 1	2	

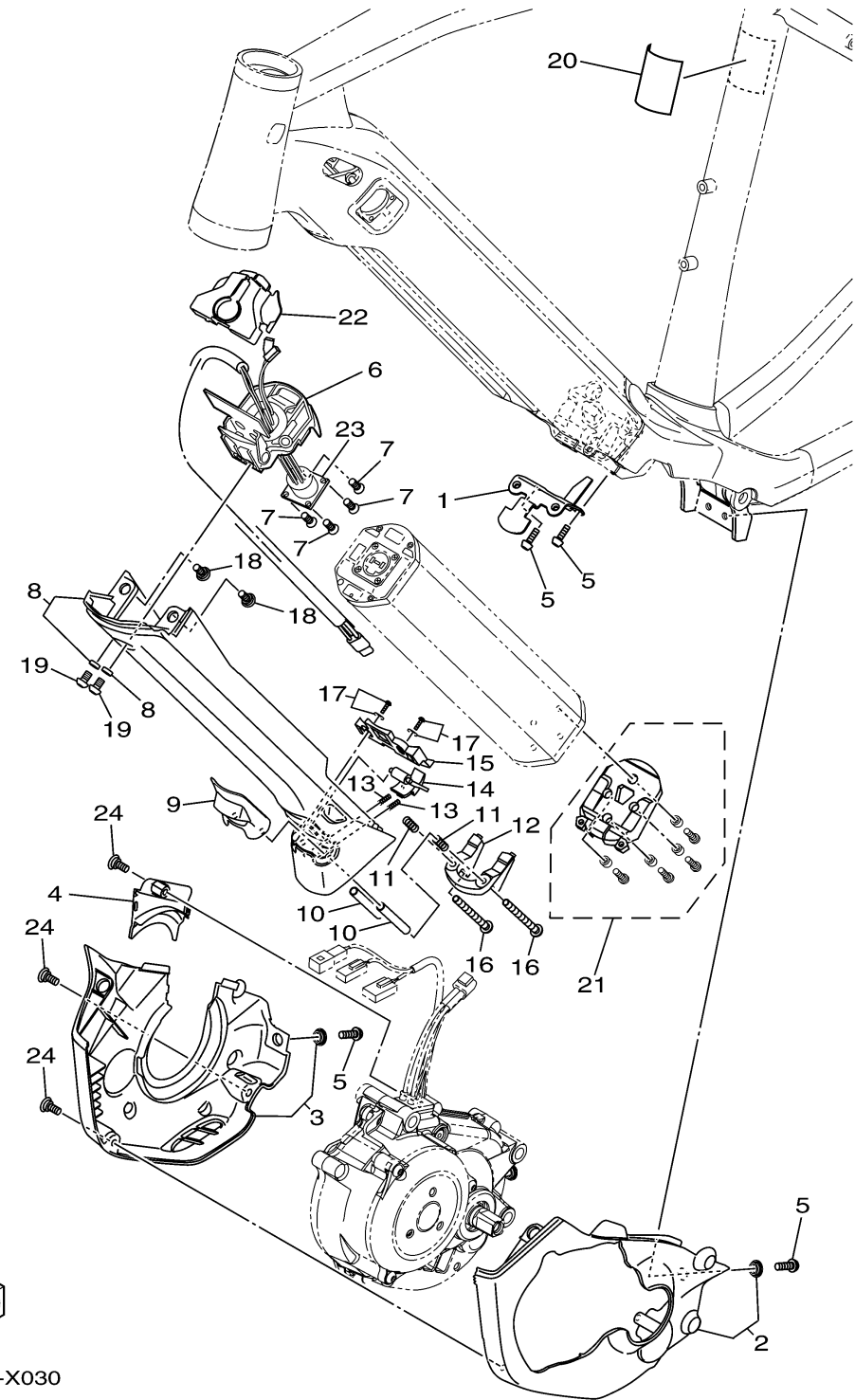
CONTINUED ON NEXT FRAME >

# FRAME



Ref No.	Part Number	Description	Qty	Remarks
35	X0N-F3364-00-00	COLLAR 2	2	
36	X1M-F389C-00-00	LABEL, CAUTION	1	
37	X1M-F143A-00-00	CAP	2	
38	X2U-F1399-00-00	CAP	1	
39	X1M-F1532-00-00	BOLT 2	2	
40	X2U-F781A-01-00	CRANK SET	1	
41	X1M-F785A-00-00	PEDAL SET	1	
42	X1M-F7300-10-00	SIDE STAND ASSY	1	
43	X1M-F7275-00-00	PLATE	1	
44	X1M-F7117-00-00	BOLT, MAIN STAND	2	
45	X0U-F4159-00-00	NUT	2	
46	X1R-87214-20-00	RECEPTACLE COMP.	1	

# SIDE COVER

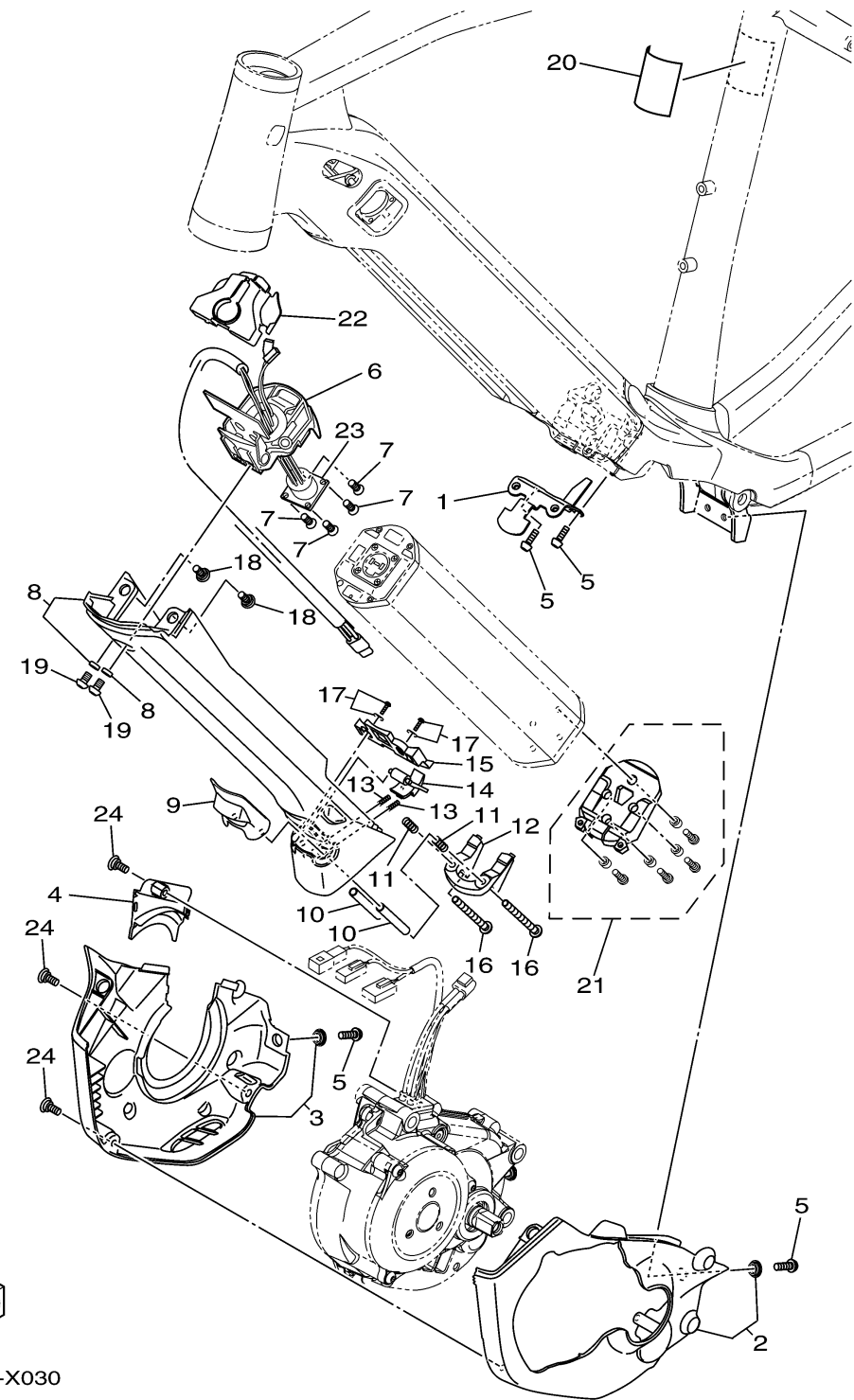


X2V4010-X030

Ref No.	Part Number	Description	Qty	Remarks
1	X2U-F1149-00-00	BRACKET, BATTERY BOX	1	
2	X2U-F198G-00-00	COVER 2	1	
3	X2U-F198G-10-00	COVER 2	1	
4	X2U-F198J-00-00	COVER 3	1	
5	X1M-F11C5-00-00	SCREW 1	4	
6	X2U-F2802-00-00	BASE COMP,MOUNT	1	
7	X0U-F4473-00-00	SCREW	4	
8	X2U-F198F-00-00	COVER 1	1	
9	X2U-F118W-00-00	STOPPER	1	
10	X2U-F316E-00-00	SPACER	2	
11	X2U-F1742-00-00	SPRING	2	
12	X2U-F3358-00-00	HOLDER STOPPER 1	1	
13	X2U-F178D-00-00	SPRING, HOOK	2	
14	X2U-F1872-00-00	STOPPER	1	
15	X2U-F117N-00-00	COVER 3	1	
16	X2U-F1738-00-00	BOLT	2	
17	X2U-F585H-00-00	SCREW,SET	2	
18	X2U-F4453-00-00	SCREW	4	
19	X2U-F4453-10-00	SCREW	2	
20	X2U-F1696-00-00	LABEL, CAUTION	1	

CONTINUED ON NEXT FRAME >

# SIDE COVER



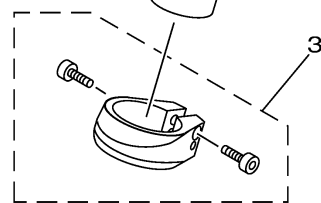
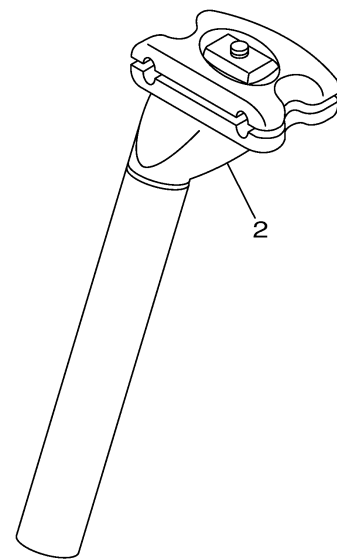
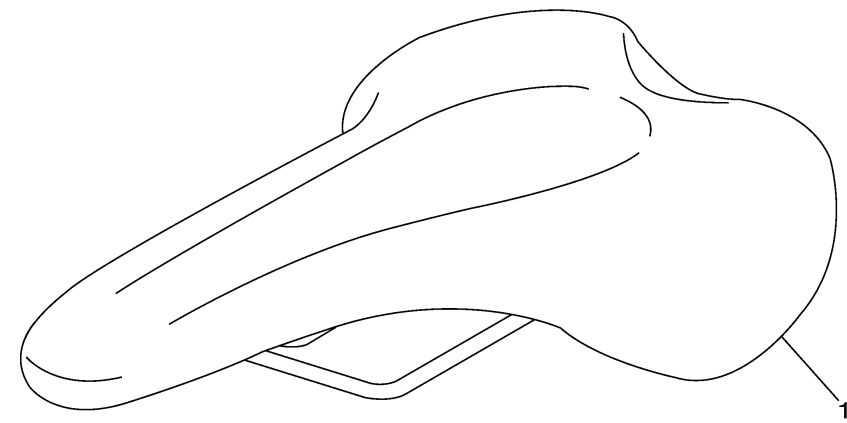
X2V4010-X030

Ref No.	Part Number	Description	Qty	Remarks
21	X2U-F3438-00-00	CAP, END	1	
22	X2U-F637G-00-00	HOLDER, WIRE	1	
23	X1R-87234-50-00	PLUG, D.C.RECEPTACLE	1	
24	X1M-F1738-00-00	BOLT	3	



# SEAT & CARRIER

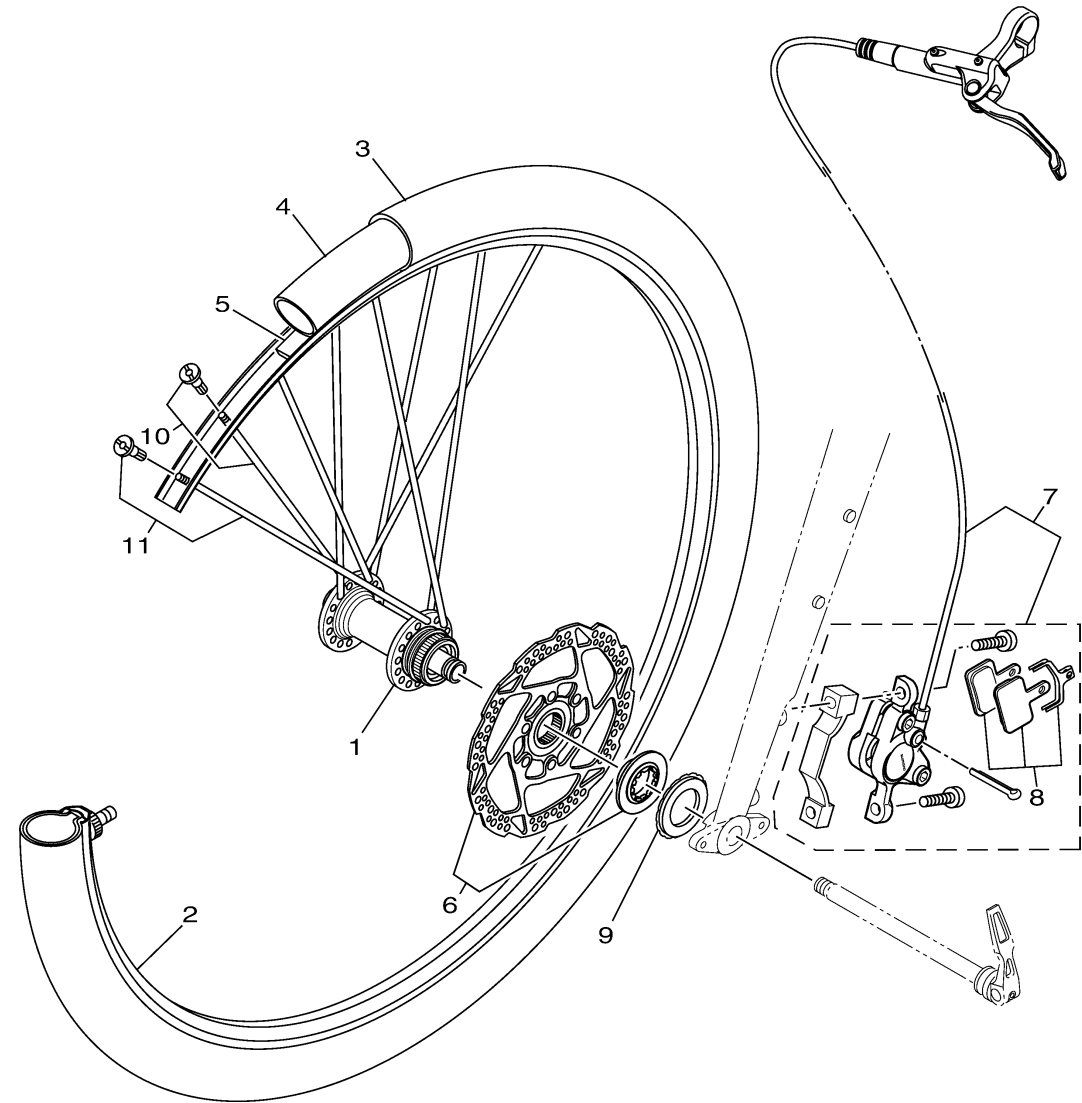
Ref No.	Part Number	Description	Qty	Remarks
1	X0N-F4910-50-00	SADDLE ASSY	1	
2	X0N-F4921-51-00	PILLAR, SEAT	1	
3	X1V-F4717-00-00	BOLT, SEAT FITTING	1	



X2V4010-X040

# FRONT WHEEL

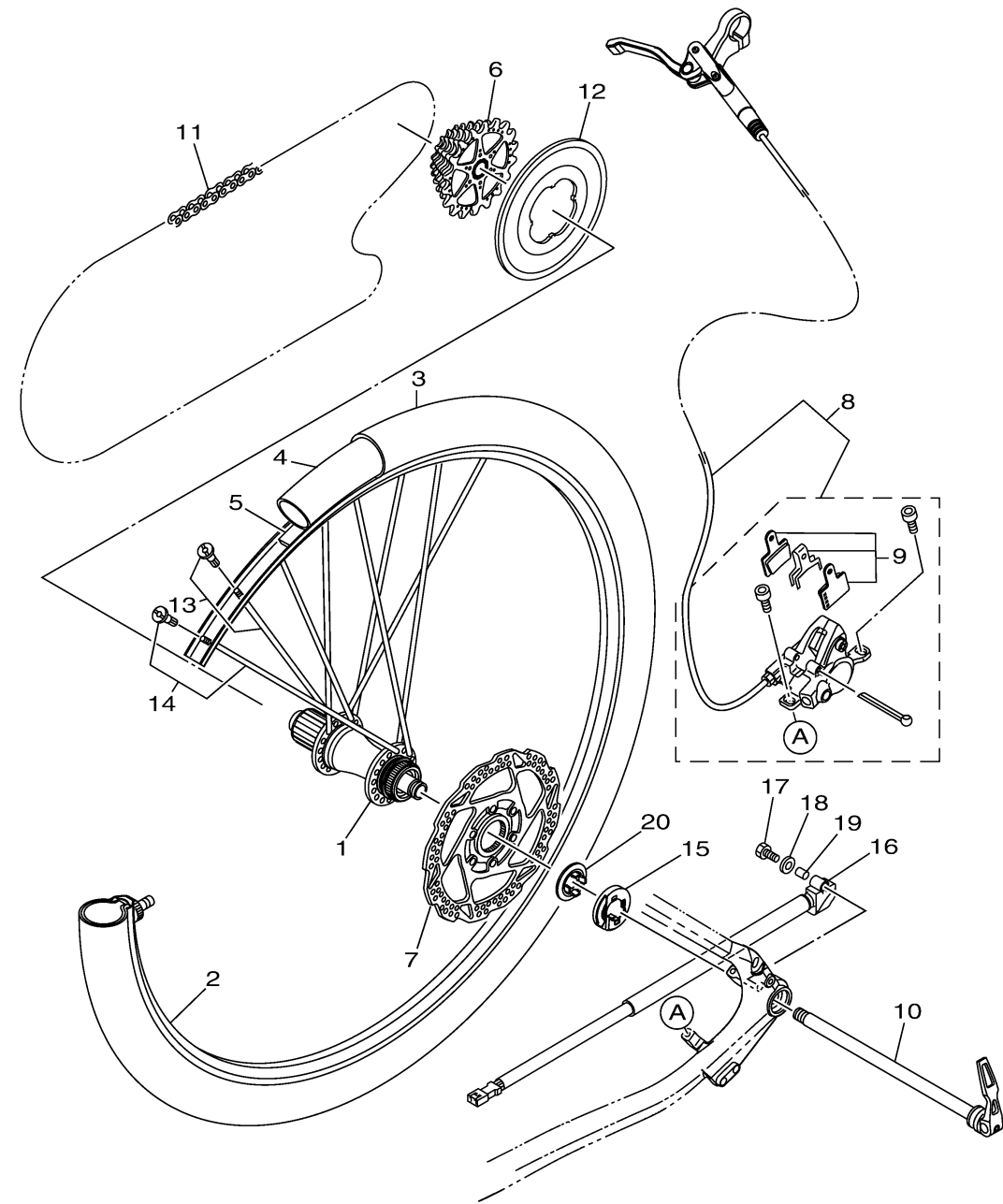
Ref No.	Part Number	Description	Qty	Remarks
1	X1M-F5110-00-00	HUB ASSY, FRONT	1	
2	X2U-F5144-10-00	RIM	1	
3	X2U-F510S-10-00	TIRE	1	27.5X2.00
4	X2U-F510T-10-00	TUBE	1	27.5X1.9/2.125
5	X0N-F510U-10-00	BAND, RIM	1	
6	X2U-F5711-20-00	DISC, BRAKE	1	
7	X2U-F510E-00-00	BRAKE ASSY	1	
8	X1M-F5130-80-00	. .BRAKE SHOE COMP.	1	
9	X1M-F5413-00-00	NUT, LOCK	1	
10	X2U-F510W-10-00	SPOKE NIPPLE SET 1	1	
11	X2U-F510X-10-00	SPOKE NIPPLE SET 2	1	



X2U4110-X050

The number used per Front Wheel 32 pcs.

# REAR WHEEL

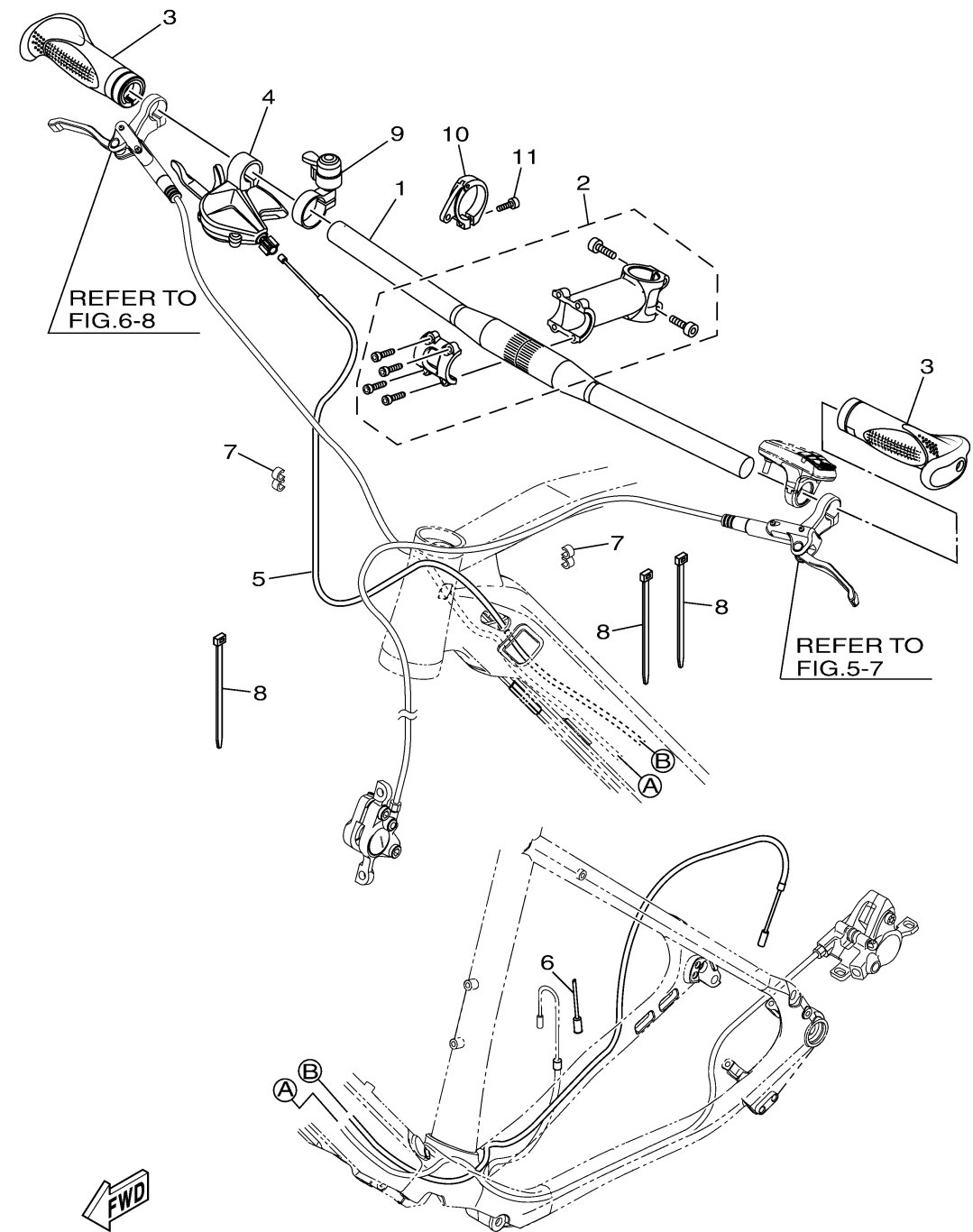


X2U4110-X060

The number used per Rear Wheel 32 pcs.

Ref No.	Part Number	Description	Qty	Remarks
1	X1M-F5310-00-00	HUB ASSY	1	
2	X2U-F5144-10-00	RIM	1	
3	X2U-F510S-10-00	TIRE	1	27.5X2.00
4	X2U-F510T-10-00	TUBE	1	27.5X1.9/2.125
5	X0N-F510U-10-00	BAND, RIM	1	
6	X2U-F5410-00-00	RR. WHEEL SPROCKET COMP.	1	
7	X1M-F5711-40-00	DISC, BRAKE	1	
8	X2U-F5701-00-00	REAR BRAKE ASSY	1	
9	X1M-F5130-80-00	. .BRAKE SHOE COMP.	1	
10	X1M-F533B-10-00	THROUGH AXLE BOLT ASSY.,RR.	1	
11	X2U-F53C0-10-00	CHAIN	1	
12	X1M-F531C-10-00	PROTECTOR, SPOKE	1	
13	X2U-F531W-10-00	SPOKE NIPPLE SET 1	1	
14	X2U-F531X-10-00	SPOKE NIPPLE SET 2	1	
15	X1M-8352Y-00-00	MAGNET COMP.	1	
16	X1M-81670-00-00	PICK-UP ASSY	1	
17	91317-03012-00	BOLT,HEX.SOCKET HEAD	1	
18	92907-03200-00	WASHER	1	
19	X0N-83522-00-00	COLLAR	1	
20	X1M-85557-01-00	HOLDER	1	

# STEERING HANDLE & CABLE

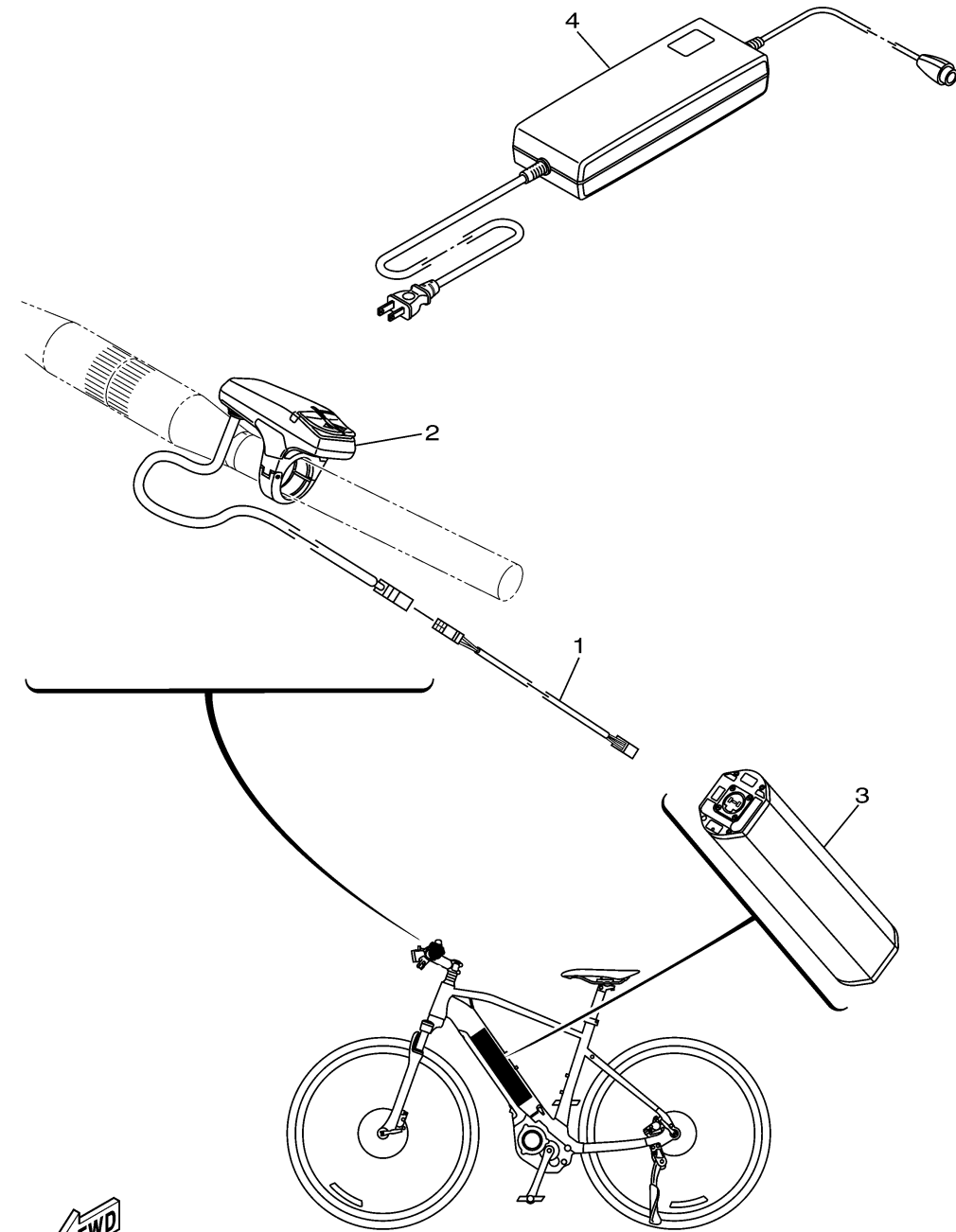


Ref No.	Part Number	Description	Qty	Remarks
1	X0N-F6112-40-00	BAR, HANDLE	1	
2	X2U-F6126-10-00	STEM, HANDLE	1	
3	X0N-F6201-10-00	GRIP SET	1	
4	X2U-F6411-00-00	SHIFT LEVER ASSY	1	
5	X1M-F632K-A0-00	WIRE, OUTER 1	1	
6	X1M-F6358-00-00	CAP	1	
7	X0N-F6392-00-00	CLIP, CABLE 2	2	
8	X1M-F1999-00-00	CLAMP, WIRE HARNESS	3	
9	X0N-H3382-20-00	BELL	1	
10	X1M-F3174-00-00	STAY, HEADLIGHT	1	
11	X1M-F6332-00-00	BOLT	1	

X2U4110-X070

# ELECTRICAL 1

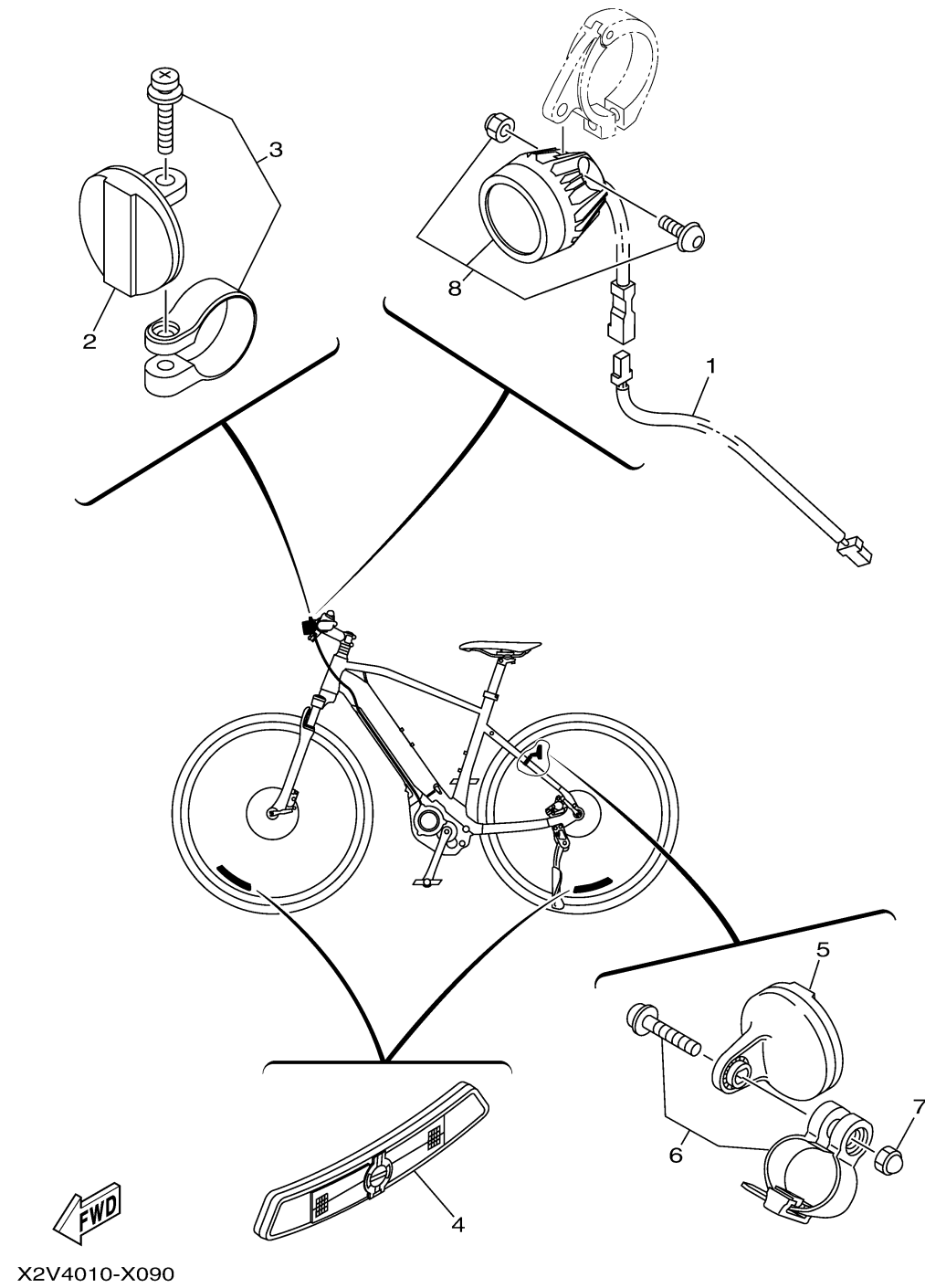
Ref No.	Part Number	Description	Qty	Remarks
1	X1V-81515-00-00	LEAD WIRE ASSY	1	
2	X0S-83500-01-00	METER ASSY	1	Dsip A, L550, '19
3	X1V-82110-00-00	BATTERY ASSY	1	
4	X1V-8210C-00-00	BATTERY CHARGER ASSY	1	



X2V4010-X080

## ELECTRICAL 2

Ref No.	Part Number	Description	Qty	Remarks
1	X73-86178-10-00	WIRE, LEAD 8	1	
2	X0N-H5110-00-00	REFLECTOR ASSY	1	
3	X0N-H3836-00-00	BAND	1	
4	X0N-H4323-00-00	REFLECTOR	2	
5	X0N-H5130-00-00	REAR REFLECTOR ASSY	1	
6	X0N-H3836-10-00	BAND	1	
7	X0U-F4681-00-00	NUT, CAP	1	
8	X1M-H4100-00-00	HEADLIGHT ASSY	1	

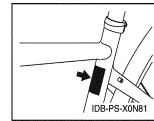


PARTS CATALOG  
**CROSSCORE RC**

CCORRCLWHT (X2U4 - 010A)  
 CCORRCLSAG (X2U4 - 010B)  
 CCORRCLDES (X2U4 - 010C)  
 CCORRCMWHT (X2U5 - 010A)  
 CCORRCMSAG (X2U5 - 010B)  
 CCORRCMDES (X2U5 - 010C)

Color	Abbreviation	Color Code
Light Bluish Gray Pearl 1	LBNP1	1638
Mat Greenish Gray Metallic 1	MGNM1	1869
Deep Yellowish Red Metallic 7	DYRM7	1873

Serial No.



OWNERS LIT-15626-00-14  
 SERVICE LIT-15616-00-02  
 ASSEMBLY LIT-15666-00-14

PC65CRL  
 PC65CRM  
 PC65CRS  
 2022

# 1 TITLE PAGE

Ref No.	Part Number	Description	Qty	Remarks
---------	-------------	-------------	-----	---------